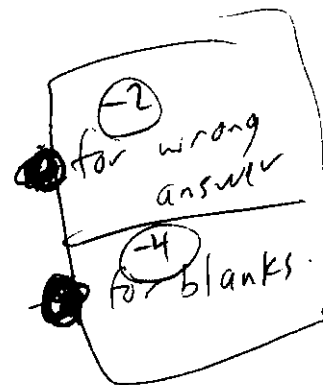


Please circle the letter for the correct answer for the questions on this page.

- Sodium is a(n) ____.
 - Alkaline earth metal
 - Chalcogen
 - Pnictogen
 - Noble gas
 - Alkali metal
- The elements on the modern periodic table are arranged in order of ____.
 - Mass number
 - Neutron number
 - Atomic number
 - Size
 - Atomic mass
- Dry ice (solid carbon dioxide) is a(n) ____.
 - Compound
 - Element
 - Homogeneous mixture
 - Heterogeneous mixture
 - Mysterious mixture
- Which of the following is a chemical property of copper?
 - Copper turns green when exposed to air.
 - Copper is a solid at room temperature.
 - Copper is a soft metal.
 - Copper conducts heat well.
 - Copper is used in coins.
- A pure substance that cannot be decomposed by chemical methods is called ____.
 - An element
 - Divisible
 - A homogeneous mixture
 - An ion
 - A dimer



6. Vertical columns of the periodic table are called ____.

- a. Rows or periods
- b. Families or groups
- c. Metals
- d. Nonmetals
- e. Metalloids

7. Which of the following materials is a pure substance?

- a. sugar (sucrose)
- b. iodized salt
- c. milk
- d. window cleaner
- e. household bleach

8. Gold (Au) is classified as a:

- a. Element
- b. Compound
- c. Heterogeneous mixture
- d. Homogeneous mixture

9. Water (H₂O) is classified as a:

- a. Element
- b. Compound
- c. Heterogeneous mixture
- d. Homogeneous mixture

10. The symbol for sodium is:

- a. Sm
- b. S
- c. So
- d. N
- e. Na